

oursson®

bon appétit

Instruction manual

Electric Grill

EG1510S/OR

EG1510S/DC





Congratulation on buying your new Electric Grill!

Chapter 1: Introduction

- 4** Safety Instructions
- 8** Recommendations for the installation, operation, maintenance and storage
- 9** Purpose
- 9** Useful Tips
- 10** Features
- 11** Product set
- 12** Elements of Design
- 13** Lid's handle set
- 13** Assembling the lid's handle

Chapter 2: Operation

- 14** Temperature adjustment
- 14** Adding water
- 15** Operation

Chapter 3: Possible problems and solutions

- 17** Possible problems and solutions

Chapter 4: Other

- 18** Specifications
- 19** Cleaning and maintenance
- 20** Storing
- 21** Servicing

INTRODUCTION

SAFETY INSTRUCTIONS



Danger symbol

A reminder to user about high voltage.

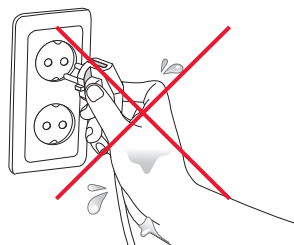
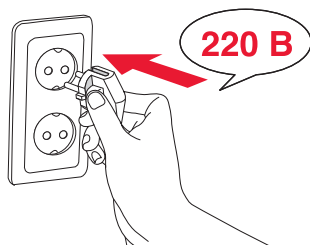


Warning symbol

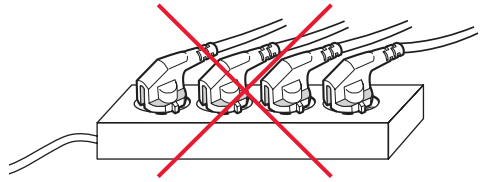
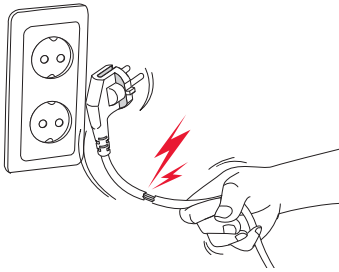
A reminder to user about the necessity of operating exactly according to the instructions.

When using electrical appliances should take the following precautions:

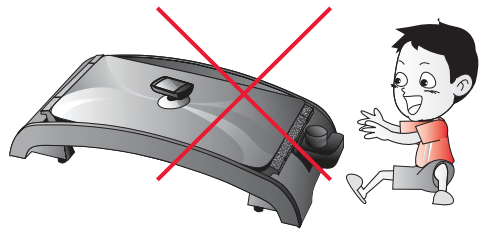
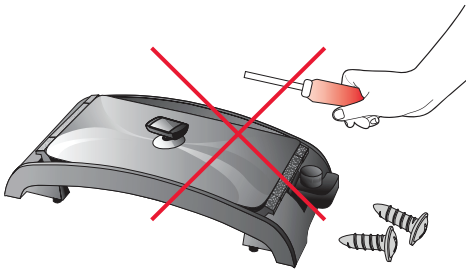
- Use the device according to the following instructions manual.
- Install the device on a stable surface.
- Use only the tools, which are included in the product set.
- To protect against risk of electrical shock do not put the cord in water or other liquid. If for some reason the water got into the unit, contact an authorized service center (ASC) OURSSON AG.
- For power supply, use a power grid with proper characteristics.
- Do not use the device in areas where the air can contain vapors of flammable substances.
- Never attempt to open the device by yourself – it could possibly be the reason of an electrical shock can lead to product malfunction and will invalidate the manufacturer's warranty. For repair and maintenance, contact only authorized service centers meant for repair of products under the trademark OURSSON.
- When moved from a cool to a warm place and vice versa unpack it before use and wait 1-2 hours without turning it on.
- In order to prevent electrical shock do not immerse the entire product or the wires into the water.
- Be particularly careful and cautious when using the device near children.



- Do not touch any moving parts, as this may cause injury.
- The power cord is specially made relatively short in order to avoid the risk of injury.
- After use, make sure to disconnect the device from the power grid.
- Keep the device from bumps, falls, vibration and other mechanical influences.

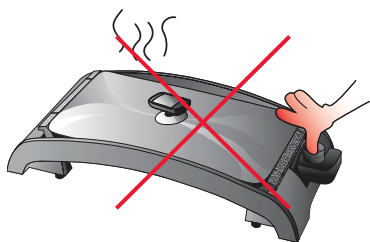


- Do not allow the cord to hang over the sharp edge of the table or touch hot surfaces.
- Do not connect this device to a grid which is overloaded with other appliances: it can lead to the fact that the device will not function properly.
- Do not install the device near gas and electric stoves and ovens.
- Make sure to disconnect the device from the power grid before cleaning or changing accessories.
- Do not use the device outdoors.
- This appliance is not intended for use by persons (including children) with reduced physical, sensory or mental capabilities, or lack of experience and knowledge.

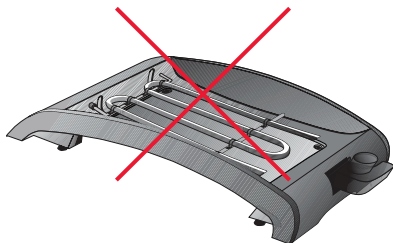
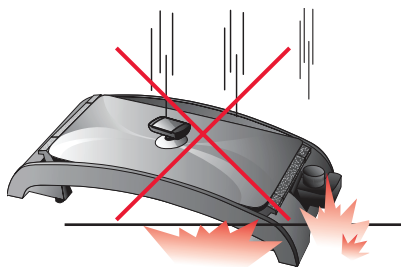


INTRODUCTION

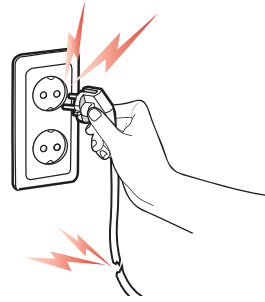
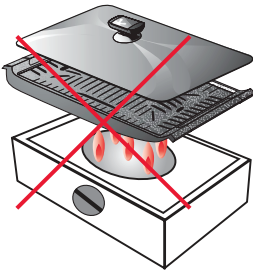
- They can only use the device under the supervision of the person responsible for their safety, or after instruction on the safe use of the device. Do not allow children to play with the product.
- To avoid burns, do not touch the hot parts of the device with bare hands for as long as they are completely cooled.



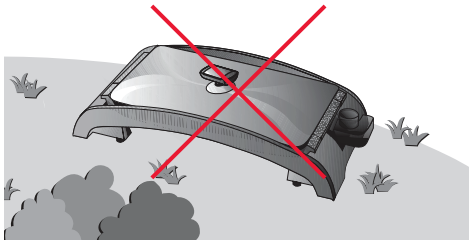
- Use the product for its intended purpose.
- This product is intended only for use in the home.
- If the power cord is damaged, it must be replaced by a specialist from the authorized service center (ASC) OURSSON AG to avoid danger.
- Use only the tools, which are included in the product set.
- When cleaning the appliance do not use abrasives and organic cleaners (alcohol, gasoline, etc.).
- When cleaning the device it is allowed to use a small amount of neutral detergent.



- To avoid burns protect face and hands from steam.
- Using the device without water tray and grill or grate may cause a fire or damage the device.



- Do not place the device on non-heat resistant surfaces, such as linoleum, vinyl or paper tablecloths. It may cause fire or damage these surfaces.
- The device must not be installed into the cabinet when operating.
- Turn on the device when the water is poured into the water tray. Failing to follow this rule may cause a fire or deformation of the device.
- Do not use removable parts for heating or cooking on gas, electric stoves or coal.
- Do not use the device near curtains or flammable objects.
- To avoid cracks do not expose the device's lid to sudden temperature changes. Wait for the lid to cool completely before washing it.



INTRODUCTION

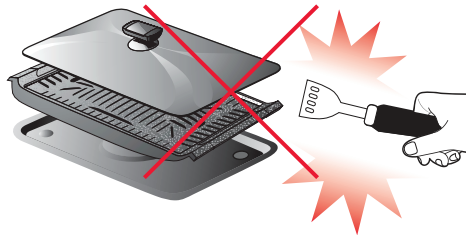
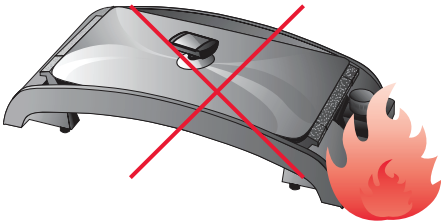
RECOMMENDATIONS FOR THE INSTALLATION, OPERATION, MAINTENANCE AND STORAGE

Please read the instruction manual before using the device. Keep the manual after reading for further use.

All illustrations in this manual are schematic representations of real objects, which may differ from the actual images.

- Unpack the device and remove all packing material. Remove all stickers from the body of the device.
- Wipe the body and inner surface with a clean dry cloth, to remove dust. Do not use abrasive cleaners and harsh sponges.
- Do not move the device when it is operating.
- If cracks have appeared on the device's surface, unplug it immediately.
- Do not use the roasting pan over an open fire.
- Install the device on a solid, flat, dry, non-metallic, non-heating surface, away from heating sources.

- Never use the device to cook flammable products.
- The device is not intended for heating places, utilizing in industrial or laboratory purposes.
- After cooking, turn off the device and let it cool.
- Do not forget to unplug it after use.
- Do not leave food on the device after cooking, the surface of the device may change color.
- Do not use metallic utensils, as they may damage the coating of the roasting pan.



PURPOSE

This electric grill is purposed for cooking and heating food.

USEFUL TIPS

- Do not place the device on the edge of the table, to avoid falling off when cooking.
- Place the device within 10 cm from the wall to prevent an overheating and for a better heat transfer.
- Do not place the device near furniture, as the heat, generated in the process of cooking, may cause discoloration or deformation of the objects.

NOTE!

Do not put towels or paper napkins near the device when it is operating, it may lead to a fire.

INTRODUCTION

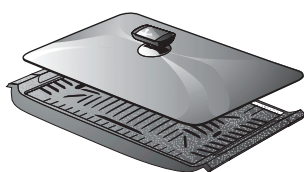
FEATURES

Features	Description
<ul style="list-style-type: none">• Smooth heat power adjustment	Smooth heat power adjustment of the electric grill.
<ul style="list-style-type: none">• Two-level safety system	A higher stability of the device is ensured by an overheating protection and presence of smooth temperature fuse.
<ul style="list-style-type: none">• Removal of excess fat	Grill grate allows fat that drips out when cooking, to drain into the water tray, and steam moisturizes the product, making it juicy and tender.
<ul style="list-style-type: none">• Unique non-stick marble coating	Unique non-stick marble coating of the removable forms significantly increases their durability and non-stick properties.
<ul style="list-style-type: none">• Automatic temperature adjustment	Ability to set the temperature from 50 up to 230°C allows to cook different kinds of food.
<ul style="list-style-type: none">• Removable forms	The forms and water tray are easy installed, replaced, washed, making the use of the device maximally easy.
<ul style="list-style-type: none">• Device heating indicator	A special indicator informs if the device reached the desired temperature.
<ul style="list-style-type: none">• Big roasting pan	Thanks to a big roasting pan, you can cook together with your friends.
<ul style="list-style-type: none">• Two removable forms: grill and roasting pan.	Depending on the type of the dish you can use roasting pan to stew or grill to fry.
<ul style="list-style-type: none">• Colors	EG1510S/OR - Orange EG1510S/DC – Dark Cherry

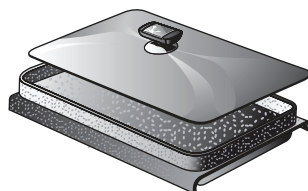
PRODUCT SET

Electric grill	1 pc.
Roasting pan	1 pc.
Glass lid	1 pc.
Grill pan	1 pc.
Water tray	1 pc.
Power cord	1 pc.
Instructions manual	1 pc.
Warranty card	1 pc.
Recipe book	1 pc.

NOTE! To avoid burns, do not touch the hot parts of the device with bare hands for as long as they are completely cooled.



Grill pan



Roasting Pan

INTRODUCTION

ELEMENTS OF DESIGN

- ❶

Lid's handle
- ❷

Glass lid
- ❸

Roasting pan
- ❹

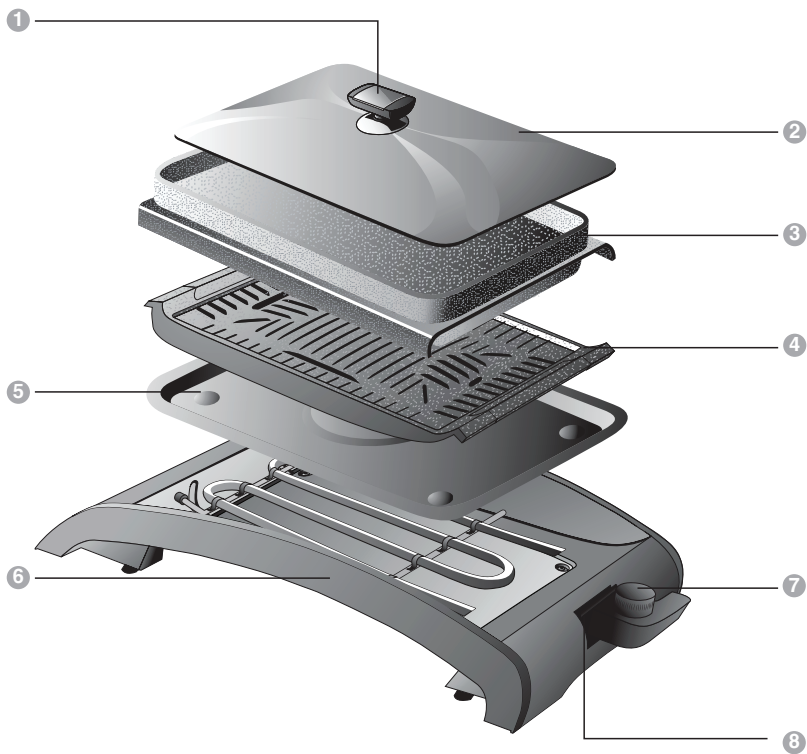
Grill
- ❺

Water tray
- ❻

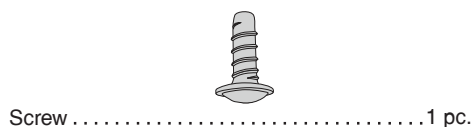
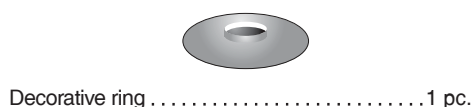
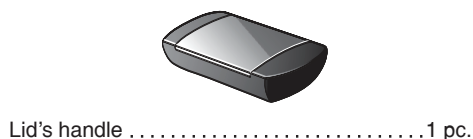
Body
- ❼

Temperature adjustment
- ❽

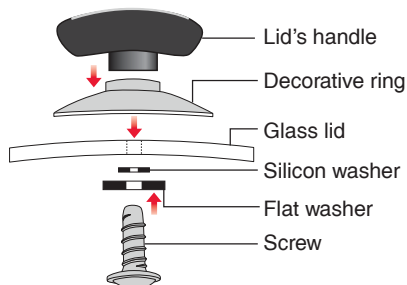
Handle



LID'S HANDLE SAT



ASSEMBLING THE LID'S HANDLES

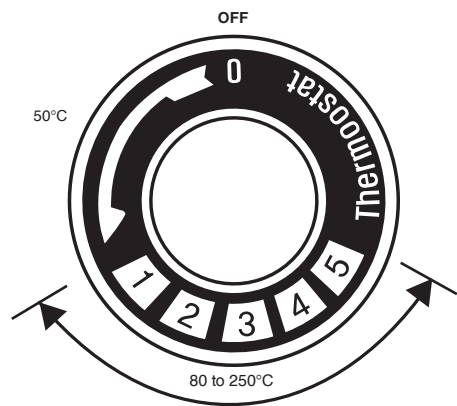


1. When assembling, place the flat washer with the soft part on the glass. (If you place it with the rough side, you may damage the glass lid).
2. Not following the order of arrangement of the washers may also cause damage to the glass.
3. Place the handle on the glass lid, insert the screw and turn the handle, until the screw starts turning with the handle.

NOTE! If you turn the handle too tight, you may damage the glass.

OPERATION

TEMPERATURE ADJUSTMENT



ADDING WATER

Who to add water into the water tray

1. Set the temperature adjustment to «0».
2. Let it cool, lift the removable form and check the water level.
3. If there is not enough water, add some.

NOTE! When cooking, hourly check the water and add it if necessary.

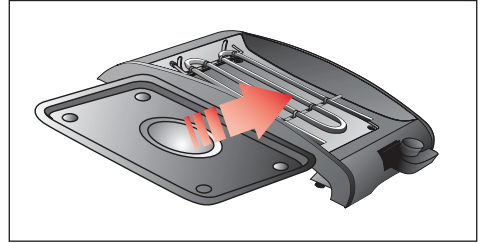
Regulator's position	Temperature, °C
0 - 1	0 to 50
1 - 2	to 80
2 - 3	to 160
3 - 4	to 180
4 - 5	to 250

NOTE! The water volume in the tray must not exceed 400 ml.

OPERATION

1. Install the water tray correctly.

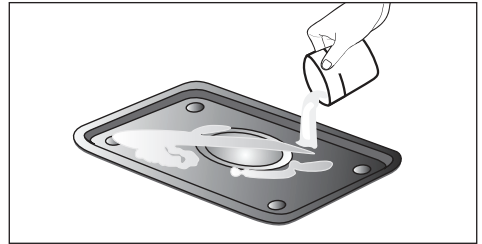
Guided by the features of the water tray, place it correctly on the lower part of the body.



2. Pour water into the water tray.

The water volume in the tray must not exceed 400 ml.

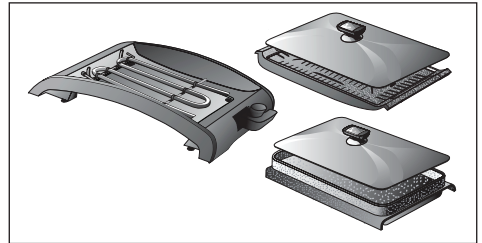
Add water hourly.



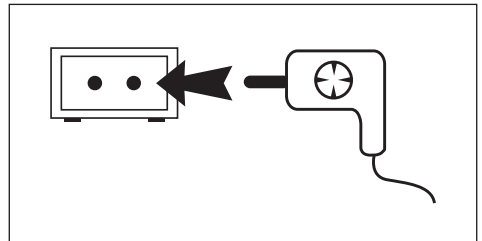
3. Install the grill pan.

Make sure that the grill pan is installed correctly. If you are using the roasting pan, do not fill it to the brim.

If during cooking, the food is coming out, remove the glass lid from the roasting pan. Removable forms do not require vegetable oil.

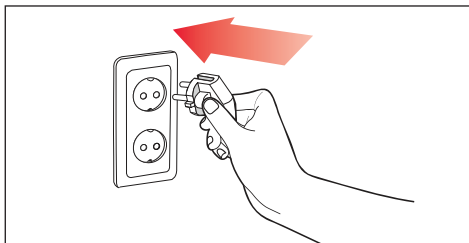


4. Plug in the cord into the socket on the grill's body.



OPERATION

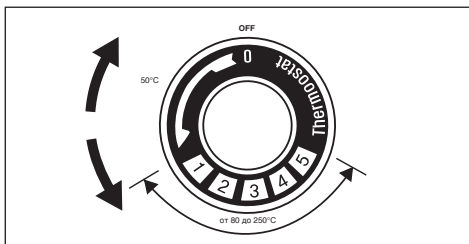
5. Make sure that the parameters of your socket comply with the requirements.



6. When heating up the food, set the temperature to max for your dish and regulate it if required.

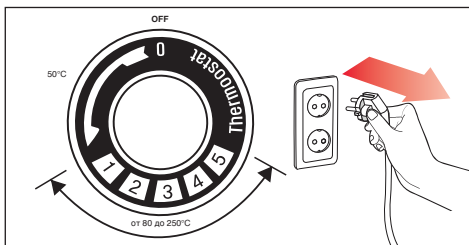
When using the device for the first time, heat up to the max temperature.

If the food burns, lower the temperature by reducing the heating rate by 1.



7. When the cooking is complete, set the temperature adjustment to "0" and unplug the device.

Do not touch water tray, forms or any other part when cooking and after that, because they are very hot.



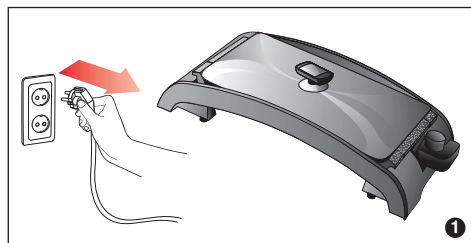
POSSIBLE PROBLEMS AND SOLUTIONS

Possible problems	Possible cause	Solutions
Power indicator doesn't lit	<ul style="list-style-type: none"> The devise isn't plugged in Temperature adjustment is on «0» mark 	<ul style="list-style-type: none"> Firmly insert the plug into the socket Set the temperature regulator to a necessary position
Food burns to the surface of the form	<ul style="list-style-type: none"> The form has not been thoroughly cleaned You are using a too high temperature for cooking 	<ul style="list-style-type: none"> Clean the form Lower the temperature
Grill pan overheats	<ul style="list-style-type: none"> You are using a too high temperature for cooking 	<ul style="list-style-type: none"> Lower the temperature If the grill pan still overheats, contact the service center
The form heats to weak	<ul style="list-style-type: none"> You are using a too low temperature for cooking Socket parameters do not meet the required 	<ul style="list-style-type: none"> Raise the temperature Connect to a socket with the required parameters
There is noise when the device is heating	<ul style="list-style-type: none"> There is water left in the device 	<ul style="list-style-type: none"> Wipe dry the device

SPECIFICATIONS		
MODEL	EG1510S/OR - orange EG1510S/DC – dark cherry	
Power consumption, W	1200	
Rated voltage	~ 220V; 50 Hz	
Protection class	I	
Temperature requirements:	Operation	+15°C to + 35°C
	Storage and transportation	- 40°C to + 55°C
Humidity Requirements:	Operation	15-75%
	Storage and transportation	15-75%
Dimensions (HxWxL), mm	500x280x80	
Weight, kg	5	

CLEANING AND MAINTENANCE

1. Unplug the device before cleaning
2. Unplug the cord from the device's body.
3. Do not use solvents, gasoline, hard sponges, steel sponges and brushes, and abrasive detergents as they may damage the device.
4. You can clean the device after it is completely cooled.

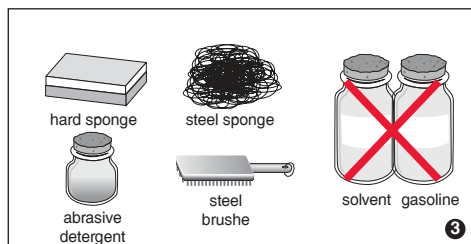
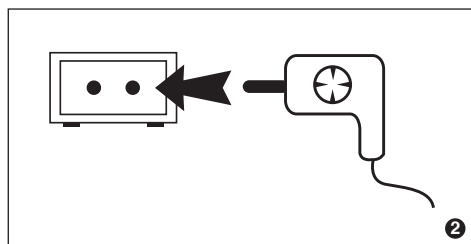


Water tray and forms

- Wash them under running water with a soft cloth and dishwashing detergents.

Body

- Wipe the body with a soft cloth or a kitchen towel.
- Wipe the heating element with a dry cloth, because moisture can cause rust.



OTHER

STORING

1. Thoroughly clean the device inside and outside.
2. Completely remove moisture from all the parts of the device. Wipe it dry, or let it dry in a cool shade.
3. For a better storage, pack the device. Put the device into a packing box and store it in a dry place.

Use only dishwashing detergents. It is not allowed to use abrasive detergents, metallic sponges and scrapers. (They may damage the coating).

Clean the forms separately from the body.

Do not use acidic detergents.

SERVICING

Company OURSSON AG expresses great appreciation to you for choosing our products.

We have done everything possible so that this meets your needs, and the quality corresponds to the best world standards. If your OURSSON branded product will need maintenance, please contact one of the authorized service center (hereinafter - ASC). A complete list of ASC and their exact addresses can be found on the website www.oursson.ru, as well as by calling

free hotline number OURSSON AG.

If you have questions or problems with OURSSON AG products, please contact in writing form the organization authorized to accept and meet the demands for the products of poor quality, - «BBK Service Center», 109202, Moscow, Fraser Highway, 17A , 1A or email info@oursson.ru.

Warranty obligations OURSSON AG:

1. Warranty obligations OURSSON AG, provided ASC OURSSON AG, apply only to models designed OURSSON AG for the production or supply and sale within the country where the warranty service is provided, purchased in this country, certified for compliance with the standards of this country, and also marked the with official marks of conformity.
2. Warranty obligations OURSSON AG operate within the law on protection of consumer rights and are regulated by the laws of the country in which they are provided, and only when the product is used exclusively for personal, family or household purposes. Warranty obligations OURSSON AG shall not apply to uses of goods for business purposes or in connection with the acquisition of goods to meet the needs of enterprises, institutions and organizations.

3. OURSSON AG sets for its products the following terms of use and warranty periods:

Product name	Terms of use	Warranty Period
Microwave ovens breadmakers, induction hobs	60	12
Multicookers, kitchen processors, electric kettles, electric grills, hand blenders, hand mixers, meat grinders, blenders, toasters, airpots, toasters, juicers, steamers, coffee makers, choppers	36	12
Kitchen scales	24	12

4. Warranty obligations OURSSON AG shall not apply to the following products, if their replacement is assumed and is not connected with disassembling products:
 - Batteries.
 - Cases, straps, cords for carrying, mounting accessories, tools, documentation that came with the product.
5. Warranty does not cover defects caused due to violations of the rules of consumer use, storage or transportation of the goods, actions of third parties or force majeure, including but not limited to the following cases:

OTHER

- If the defect was a result of careless handling, used for other purposes, violations of conditions and rules of operation set forth in the instruction manual, including as a result of exposure to high or low temperatures, high humidity or dust, traces of opening the device independently and/ or self-repair, mismatch state standards for power grids, getting liquids, insects or other foreign objects, substances inside the device, as well as long-term use of the product in extreme operational modes.
- If the defect of the product was a result of unauthorized attempts to test the product or make any changes in its construction or software programs, including repair or maintenance in unauthorized service centers.
- If the defect of the product was a result of use of non-standard and/or low quality equipment, accessories, spare parts, batteries.
- If the defect of the product is associated with its use in conjunction with additional equipment (accessories), other than additional equipment recommended by OURSSON AG for use with this product.

OURSSON AG is not responsible for the quality of the additional equipment (accessories) manufactured by third parties, for the quality of its products together with such equipment, as well as the quality of the work of the additional equipment of OURSSON AG together with the products of other manufacturers.

6. Product defects detected during the lifetime of the product are eliminated by the authorized service centers (ASC). During the warranty period, elimination of defects is free of charge with the presentation of the original certificate

of guarantee and documents that confirm the fact and date of the contract of retail purchase. In the absence of such documents, warranty period is calculated from the date of manufacture of goods. It should be taken into account:

- Setup and Installation (assembly, the connection, etc.) of the product described in the documentation attached to it, does not enter the scope of warranty OURSSON AG and can be performed by the user as well as the specialists of most authorized service centers on a paid basis.
- Work upon maintenance of products (cleaning and lubricating the moving parts, replacement of consumables and supplies, etc.) are made on a paid basis.

7. OURSSON AG is not responsible for any damage directly or indirectly caused by their products to people, pets, property, if it occurred as a result of non-observance of the rules and conditions of use, storage, transportation or installation of the product, intentional or negligent actions of consumer or third parties.

8. Under no circumstances, OURSSON AG is not responsible for any special, incidental, indirect or consequential loss or damage, including but not limited to: lost profits, damages caused by interruptions in the commercial, industrial or other activities, arising from the use of or inability to use the product.

9. Due to continuous product improvement, design elements and some technical specifications are subject to change without prior notice from the manufacturer.

Using the product when after the terms of use (lifetime):

1. Lifetime set by OURSSON AG for this product applies only when the product is used exclusively for personal, family or household needs, as well as the consumer observes the correct operation, storage and transportation of products. Under the condition of careful handling of the product and compliance with the rules of operation the actual life may exceed the lifetime set by OURSSON AG.
2. At the end of the product lifetime, you should contact an authorized service center for to conduct a preventive maintenance of the product and determine the suitability for further use. Work on conducting a preventive maintenance of the products is also made in service centers on paid basis.
3. OURSSON AG does not recommend the use of this product after the end of its lifetime without its preventive maintenance by the authorized service center, since in this case, the product can be dangerous to the life, health or property of the consumer.

Product Recycling and Disposal

After the expiration of the lifetime, the product cannot be disposed with another household waste. Instead, it shall be deposited in the appropriate recycling collection point for electrical

and electronic equipment for proper treatment and disposal in accordance with federal or local law. By disposing correctly this product, you will help to conserve natural resources and preventing the product from damaging the environment and human health. For more information on the collection point and recycling of this product, please contact your local municipal authorities or the enterprise for household waste disposal.



Date of manufacture

Each product has a unique serial number in the form of alphanumeric row and is duplicated with a barcode that contains the following information: name of the product group, date of manufacture, serial number of the product.

Serial number is located on the rear of the product, on the package and the warranty card.



- ❶ The first two letters-correspondence to the product group (electric grill - EG).
- ❷ The first two digits – year of manufacture.
- ❸ The second two digits – week of manufacture.
- ❹ The last two digits – serial number of product.

Note! To avoid misunderstandings, we highly recommend you to read carefully the instruction manual and the warranty obligations. Check the correctness of the warranty card. Warranty card is valid only if the following are correctly and clearly stated: model, serial number, date of purchase, clear stamps, buyer's signature. The serial number and the model of the device must be the same as in the warranty card. If these conditions are not fulfilled or the data specified in the warranty card was changed, the warranty card is invalid.



OURSSON AG hotline provides complete information about the company's activity in Russia, CIS and Baltic countries. Professional operators quickly answer to any question. You can contact the unified center for service support, for recommendations about the setup and connection, to get information about local sales, with questions about the promotions and yearly drawings conducted by the company, as well as with any other questions about the company's activities on the territory of Russia, CIS and Baltic countries.

Any questions? Call us, we can help!

Hotline OURSSON AG (free calls from fixed phones)

8 800 100 8708.

The hotline work schedule is: Monday-Friday from 9:00 to 20:00 (Moscow time). Saturday, Sunday and public holidays are rest days.

This manual is under protection of international and Russian copyright law. Any unauthorized use of the instructions, including copying, printing and distribution, but not limited to, involves the application of the guilty person to civil liability and criminal liability in accordance with Article 146 of the Criminal Code and the administrative responsibility in accordance with Article 7.12 of the Administrative Code (previously Article 150.4).

Contact information:

1. Manufacturer of goods - OURSSON AG (Orson AG) Utokvay 39, 8008 Zurich, Switzerland.
2. Organization authorized to accept and meet the demands for the goods of poor quality, – «Management Service Company», 109202, Moscow, Fraser Highway 17A, 1A. Ukraine LLC «Universal Distribution Company», 03065, Kyiv, blvd. I.Lepse / Academica Kablukova, 51/16.
3. Certification information product available on the website www.oursson.com.
4. Importers of products OURSSON AG: Russia: OOO «Orson», 125171, Russia, Moscow, Leningrad Highway 16A, 2. Republica Moldova: S.C. «PLAI VERDE» S.R.L. MD-2002, str. Muncesti highway., 271/A, Chisinau. Ukraine: TOV «Universal Distribution Company»; 03065, Kyiv, blvd. I.Lepse / Akademika Kablukova, 51/16.
5. Product Suppliers OURSSON AG:
Belarus: «Nikita plus», 220094, Minsk, 2nd Cycle lane., 30, office 603.

OURSSON AG
MADE IN KOREA



www.oursson.com

